



Jacks Pumps Cutters Presses Cylinders Puller
Spreaders Torque tools Nut splitters Hole punch
Moving skates Crimping tools Bolt tensioners Hydro
pumps Toughlift jacking systems Jacks Pumps Cut
Presses Torque tools Nut splitters Hole punch
Nut splitters Hole punchers Moving skates Crim
tools Bolt tensioners Hydrotest pumps Toughlift jac
systems Jacks Pumps Cutters Presses Cylinders P
kits Spreaders Torque tools Nut splitters
punchers Moving skates Crimping tools Bolt tensi

Hi-Force[®]

HYDRAULIC TOOLS

Hi-Force[®]

HYDRAULIC TOOLS

HHP Range	Hole punchers	Page 134
HKP & SKP Range	Knock-out punchers	Page 135
NS Range	Nut splitters	Page 136
HMNS Range	Self-contained nut splitters	Page 137
DNS Range	Double acting nut splitters	Page 138
HFS-H Range	Hydraulic flange spreaders	Page 139
HFS & HFS-TK Range	Hydraulic flange spreader kits	Page 140
MFS Range	Mechanical flange spreaders	Page 141
SFS Range	Stepped flange spreaders	Page 142
SJS & JS Range	Jaw spreaders	Page 143
HPB & HPF Range	Workshop presses, V-blocks & bed winches	Pages 144 - 145
RSM Range	Nylon multi-roller steerable moving skates	Page 146
RSC, RSS & RSH Range	Multi-purpose moving skates	Page 147
REX & RSX Range	Heavy duty moving skates	Page 148
TL Range	ToughLift Jacking Systems	Pages 149 - 154

HHP - HOLE PUNCHERS

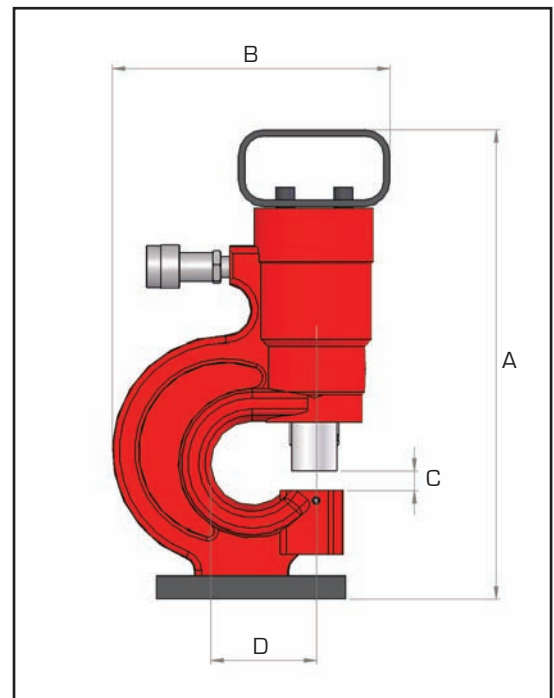


Punching force up to 50 tonnes

Throat depth 70mm

Working pressure 700 Bar

The Hi-Force HHP series hydraulic hole puncher range offers a choice of two models comprising of the HHP30, 30 tonnes capacity single acting version, and the HHP50, 50 tonnes capacity double acting version. Both models are suitable for punching holes in steel plate as per the respective capacity of each model and are supplied complete with standard punch and die sets and an integral positioning and carrying handle. See pages 25-44 for detailed information and suitable pumps for use with HHP series punchers.



Model number	Maximum force tonnes	Throat depth mm	Punch capacity (mm)		Standard punch/die sets included mm	Recommended pump & hose		Weight excl. pump kg
			Steel plate	Hole punch diameter		Manually operated	Pneumatically operated	
HHP30	30	70	10.0	up to 20.5	10.5, 13.5 17.5, 20.5	HP232 complete with HC3 3m hose	AHP1120 complete with HC3 3m hose	19.8
HHP50	50	70	15.0	up to 25.0	10.5, 13.5 17.5, 20.5, 25.0	HP232D c/w 2 x HC3	AHP1141 c/w 2 x HC3	42.0

Note: pump supplied separately

Model number	Dimensions in mm			
	A	B	C	D
HHP30	372	216	15	78
HHP50	412	281	15	71



The HHP30 is single acting operation, the HHP50 is double acting operation.

HKP & SKP - KNOCK OUT PUNCHERS



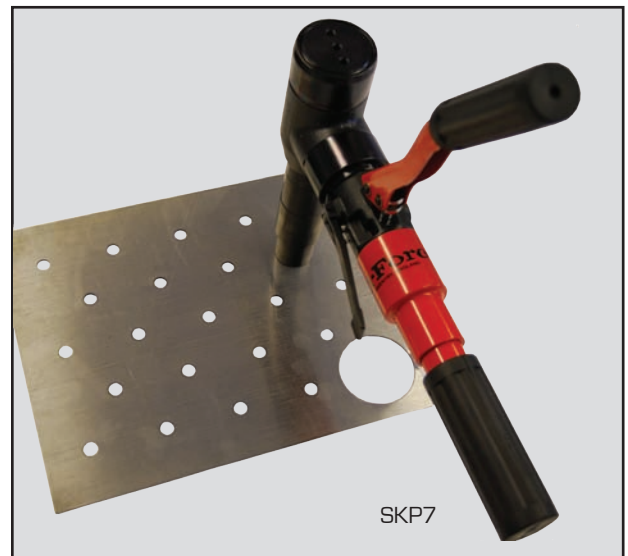
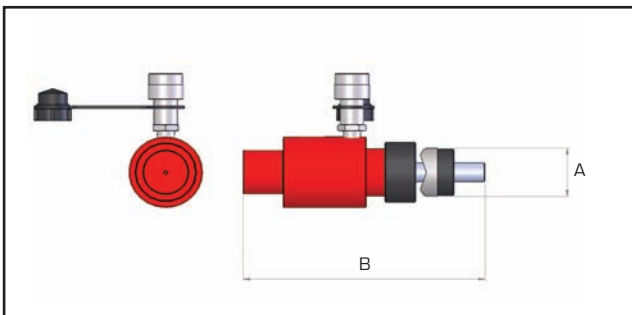
Capacity up to 10 tonnes

Spring return hydraulic cylinder

Working pressure 700 Bar

The Hi-Force HKP and SKP knock out puncher range is supplied as a complete set, including all standard sizes of punches/dies as specified below. Ideal for on-site hole punching in electric control panels and metal plates.

Model number	Maximum force tonnes	Plate capacity (mm)		Pump Included	Hose Included	Complete set weight kg
		Stainless steel	Mild steel			
HKP10-2	10	1.6	3.2	HP110	HC2	14.6
HKP10-4	10	1.6	3.2	HP110	HC2	26.1
HKP10-2H	10	1.6	3.2	Not included	Not included	7.0
HKP10-4H	10	1.6	3.2	Not included	Not included	18.5
SKP7	7	1.6	3.2	Self contained unit with integral pump		9.0



Did you know.....

Hi-Force knock-out punchers are supplied complete with a carrying case

Model number	Description	Punches/dies included									
		21.8	27.6	34.1	42.7	48.7	60.5	76.1	88.9	102.8	115.5
HKP10-2	Std. punch/die A	21.8	27.6	34.1	42.7	48.7	60.5				
	Conduit Size	1/2"	3/4"	1"	1 1/4"	1 1/2"	2"				
	Length B	306	240	240	240	240	240				
HKP10-4	Std. punch/die A	21.8	27.6	34.1	42.7	48.7	60.5	76.1	88.9	102.8	115.5
	Conduit Size	1/2"	3/4"	1"	1 1/4"	1 1/2"	2"	2 1/2"	3"	3 1/2"	4"
	Length B	306	240	240	240	240	240	253	253	253	253
SKP7	Std. punch/die A	21.8	27.6	34.1	42.7	48.7	60.5				
	Conduit Size	1/2"	3/4"	1"	1 1/4"	1 1/2"	2"				
	Length B	306	240	240	240	240	240				



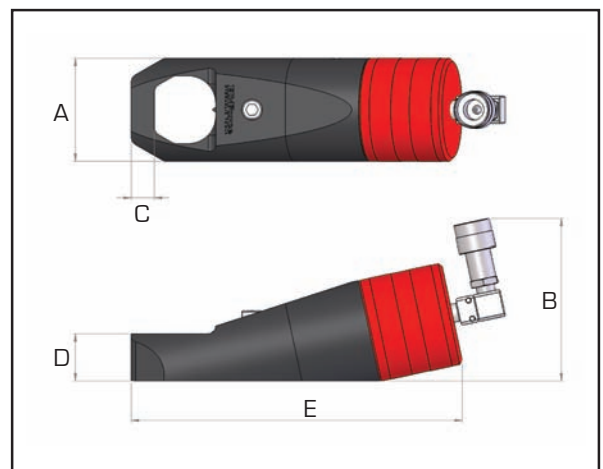
Capacities from 17 to 75mm AF

Working pressure 700 Bar

Compact & easy to use

The improved NS range of hydraulic nut splitters offers a choice of 5 models suitable for hexagon nut AF sizes from 17 to 75mm (M10 to M48 bolt sizes). The revolutionary design incorporates a hardened steel linkage that ensures the blade cutting edge is kept parallel to the nut throughout the splitting process which improves operational efficiency and more importantly, blade life. Designed to easily split corroded nuts up to RC44 hardness, Hi-Force nut splitters offer the ideal 'cold cut' solution for removing worn or corroded fasteners, especially in applications where 'hot work' permits are not allowed. All NS models are supplied fitted with a unique 360° positional swivel coupling for easy adjustment and fitment in confined spaces. Suitable pumps are detailed on pages 25 to 44.

- >> Angled body design on all models
- >> Provides necessary clearance on flanges and flat surfaces
- >> Manufactured from high quality steel



Model number	Hexagon AF sizes mm	Bolt sizes mm	Weight kg
NS104	17 - 32	M10 - M22	4.0
NS110	32 - 41	M22 - M27	7.4
NS200	41 - 50	M27 - M33	10.6
NS206	50 - 60	M33 - M39	15.8
NS215	60 - 75	M39 - M48	39.3

Dimensions in mm				
A	B	C	D	E
64	132	12.5	30.0	210
78	140	20.0	37.0	270
94	175	21.0	43.0	302
105	161	24.0	52.0	334
156	185	27.0	75.0	418



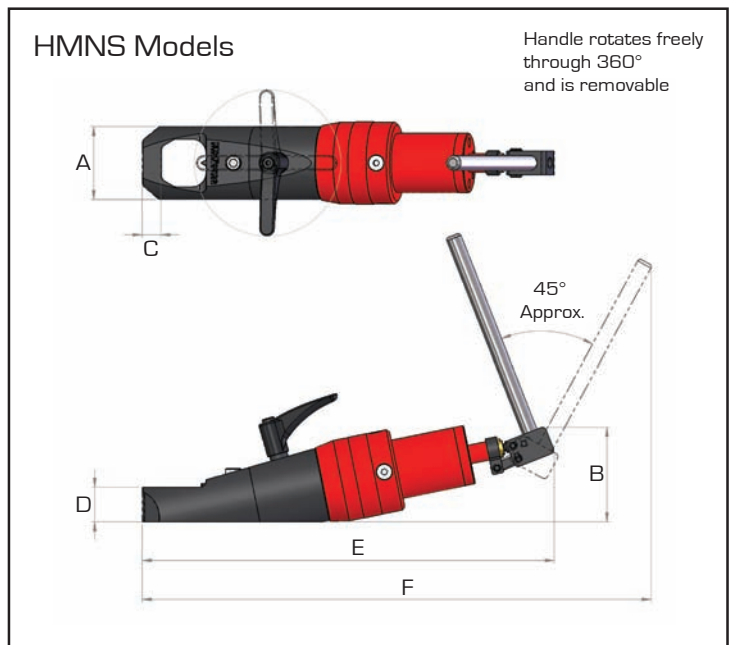
Capacities from 17 to 50mm AF

Choice of 3 models

Compact & easy to use

The HMNS range of hydraulic nut splitters offers a choice of 3 models suitable for hexagon nut AF sizes from 17 to 50mm (M10 to M33 bolt sizes). All models have an angled body design to provide the necessary clearance on flanges and flat surfaces. The revolutionary design incorporates a hardened steel linkage that ensures the blades cutting edge is kept parallel to the nut throughout the splitting process which improves operational efficiency and more importantly, blade life. Designed to easily split corroded nuts up to RC44 hardness, Hi-Force nut splitters offer the ideal 'cold cut' solution for removing worn or corroded fasteners, especially in applications where 'hot work' permits are not allowed. All models incorporate an integral hydraulic pump with multi-positional lever for even greater versatility.

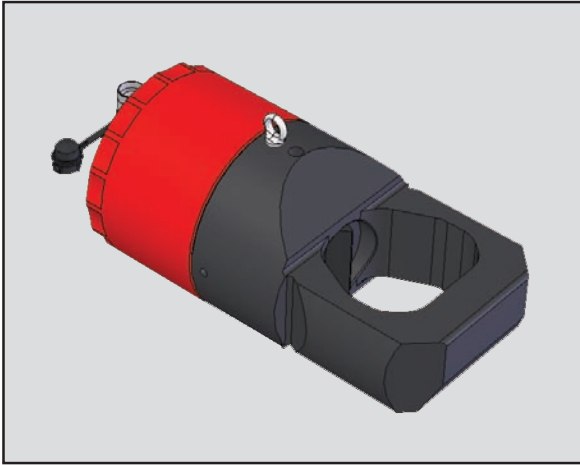
- >> Angled body design on all models
- >> Provides necessary clearance on flanges and flat surfaces
- >> Manufactured from high quality steel



Model number	Hexagon AF sizes mm	Bolt sizes mm	Weight kg
HMNS104	17 - 32	M10 - M22	5.8
HMNS110	32 - 41	M22 - M27	7.9
HMNS200	41 - 50	M27 - M33	13.6

Dimensions in mm					
A	B	C	D	E	F
64	88	12.5	30.0	380	455
78	101	20.0	37.0	440	540
94	112	21.0	43.0	471	566

DNS - DOUBLE ACTING HYDRAULIC NUT SPLITTERS



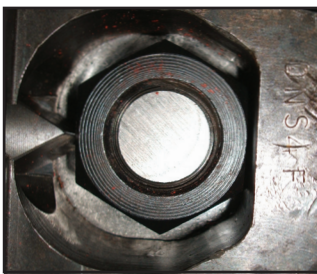
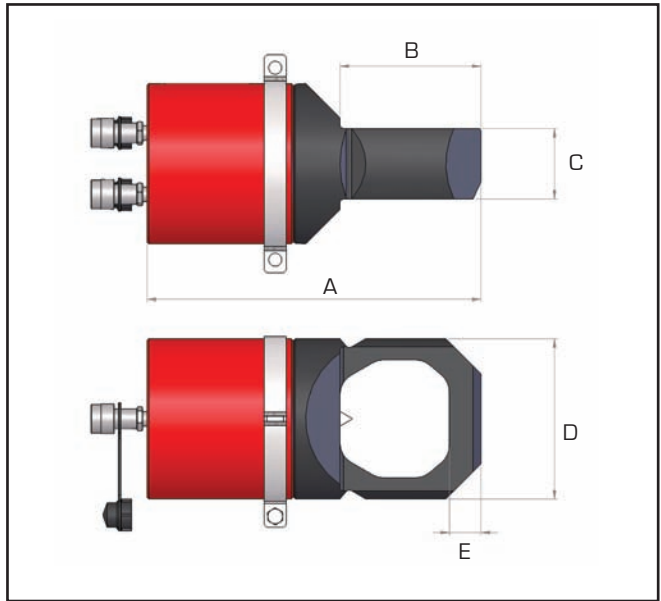
Choice of 2 models

Working pressure 700 Bar

Double acting design

The Hi-Force DNS range of double acting, hydraulic nut splitters offers a choice of 2 models suitable for splitting nuts of across flats (AF) sizes from 2.15/16" to 5.3/8" (74mm to 136mm). Both models are 700 bar maximum working pressure and feature a double acting hydraulic piston for easy extension and retraction of the toughened steel splitting blade. Suitable manual and powered pumps for use with DNS range nut splitters can be found on pages 25-44 of this catalogue. Hi-Force DNS range hydraulic nut splitters are easy to set up and capable of safely splitting nuts quickly without any sparks, flames or flying debris usually associated with cutting torches. The DNS range nut splitter heads are designed to fit on all API and ANSI flanges and capable of splitting the hardest nuts with minimal damage to the stud bolt threads.

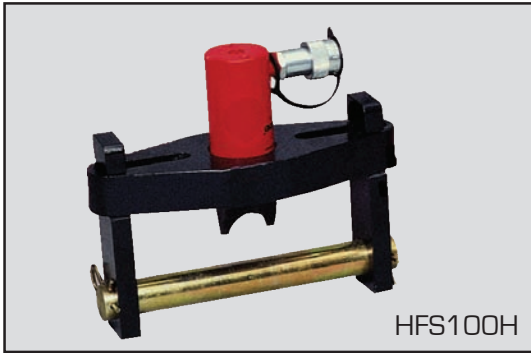
Splitting blades are easy to remove and re-install after re-sharpening or when a replacement blade is required.



Pictures (left and below) show a typical nut splitting operation taking place. In most cases it is necessary to split the nut on two opposite faces.



Model number	Hexagon AF sizes		Stud bolt thread sizes		Weight kg	Dimensions in mm				
	inch	mm	imperial	metric		A	B	C	D	E
DNS404	2 ¹⁵ / ₁₆ " - 4 ¹ / ₄ "	74 - 105	1 ⁷ / ₈ " - 2 ³ / ₄ "	M48 - M70	47	382	161	80.5	183	36
DNS506	4 ¹ / ₄ " - 5 ³ / ₈ "	108 - 136	2 ³ / ₄ " - 3 ¹ / ₂ "	M70 - M90	95	463	198	100	243	52



Capacities from 4.5 to 10 tonnes

Working pressure 700 Bar

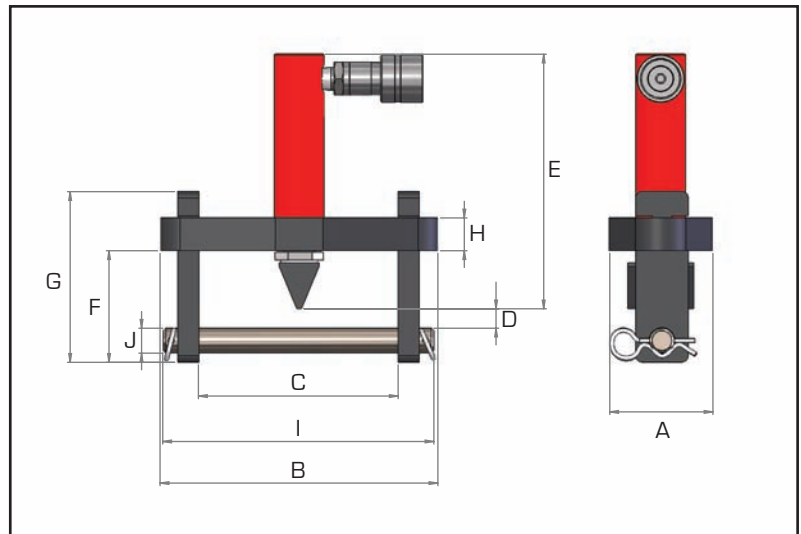
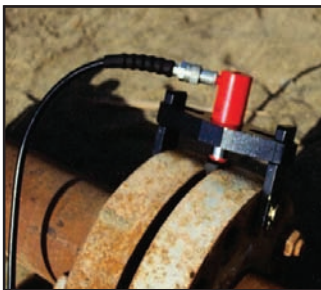
Quick and easy to assemble on flange

HFS-H hydraulic flange spreaders provide the ideal solution for safely opening pipe flanges in the marine and oil & gas industry. Available in capacities from 0 - 4.5 tonnes and 0 - 10 tonnes, these models offer the user the capability of opening flanges up to 2 x 57mm or 2 x 92mm thick respectively. Hi-Force flange spreaders can be operated individually, or as a pair when opening large flanges using a standard pump (see pages 27 to 29) and connecting hose (see page 50). With Hi-Force flange spreaders you are only minutes away from safely opening the toughest flanges without the risk of sparks caused by hammer blows, chisels and flying wedges.

>> Suitable for fitment onto flanges with a maximum stud bolt size of 1⁵/₈" (41 mm)



Pump and hose not included!
See page 140 for complete kits.



Model number	Capacity tonnes	Stroke mm	Oil capacity cm ³	Max. flange thickness mm	Stud size mm	Standard wedge mm	Weight kg
HFS50H	4.5	75	48	2 x 57	19 - 29	3 - 29	5.0
HFS100H	10	56	81	2 x 92	32 - 41	3 - 29	11.6

Model number	Dimensions in mm :										
	A	B	C min	C max	D	E	F	G	H	I	J
HFS50H	76	210	61	155	10	192	69	129	25	206	18
HFS100H	108	290	61	224	30	165	89	178	38	273	31

HFS & HFS-TK - HYDRAULIC FLANGE SPREADERS



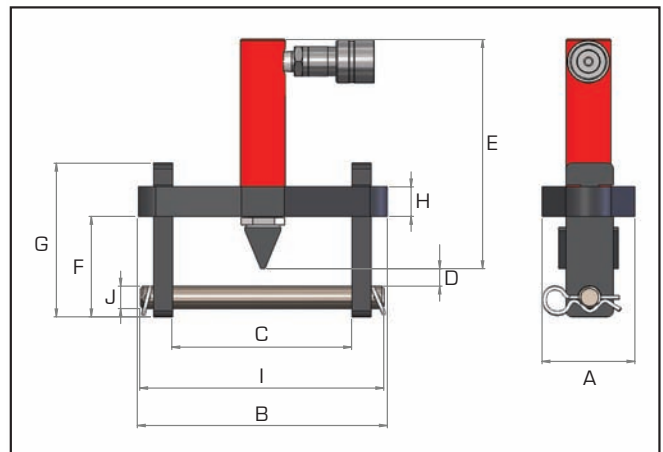
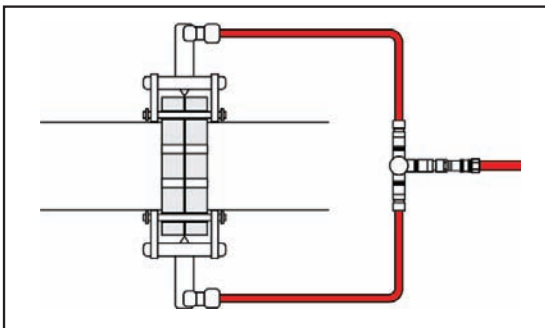
Capacities from 4.5 to 10 tonnes

Working pressure 700 Bar

Supplied in a steel storage & carrying case

HFS and HFS-TK hydraulic flange spreader kits offer a choice of either single spreader complete with pump and accessories (HFS) or a twin spreader arrangement incorporating two flange spreaders operated from a single pump with a T-piece and twin hose connection (HFS-TK). For flange separation in applications where long lengths of heavy pipework are involved, the HFS-TK twin spreader kit enables the operator to achieve parallel flange separation all around the joint. Hi-Force HP110 hand pump is supplied as standard to HFS & HFS-TK flange spreader kits and details can be found on page 27 of this catalogue.

- >> Supplied complete with manually operated pump and hose assembly
- >> Suitable for fitment onto flanges with a maximum stud bolt size of 1 5/8" (41 mm)



Specifications :

Model number	Capacity tonnes	Stroke mm	Oil capacity cm ³	Max. flange thickness mm	Stud size mm	Standard wedge mm	Weight kg
HFS50	4.5	75	48	2 x 57	19 - 29	3 - 29	22.5
HFS100	10	56	81	2 x 92	32 - 41	3 - 29	29.1
HFS50-TK	2 x 4.5	75	2 x 48	2 x 57	19 - 29	3 - 29	27.5
HFS100-TK	2 x 10	56	2 x 81	2 x 92	32 - 41	3 - 29	35.7

Dimensions in mm :

Model number	A	B	C min	C max	D	E	F	G	H	I	J
HFS-50	76	210	61	155	10	192	69	129	25	206	18
HFS-100	108	290	61	224	30	165	89	178	38	273	31
HFS50-TK	76	210	61	155	10	192	69	129	25	206	18
HFS100-TK	108	290	61	224	30	165	89	178	38	273	31

MFS - MECHANICAL FLANGE SPREADERS



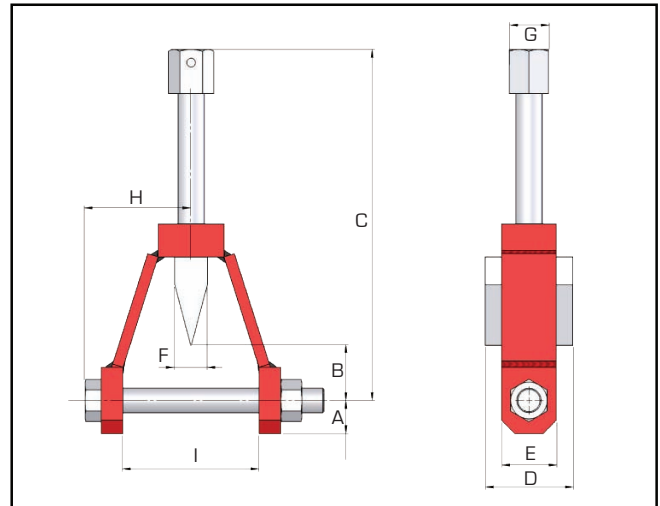
Suitable for bolt diameters up to 31mm

Maximum spread 231mm

No external power source required

The MFS range of mechanical flange spreaders comprises of 6 models, each offering a safe and economical way to open flanges without the risk of sparks. The threaded spindle can be operated using a standard spanner, allowing the user to apply a controlled force without damaging the flange. Due to the mechanical design of these flange spreaders, no external power source is needed and therefore, they can be used anywhere on-site.

- >> Choice of six models available
- >> High grade steel construction with high tensile cross bolt
- >> Case hardened spreading wedge



Model number	Dimensions in mm									
	A	B max.	C min.	C max.	D	E	F	G	H	I
MFS16	25	28	185	232	65	40	25	30	66	70
MFS19	30	50	185	254	65	50	25	30	81	95
MFS22	30	50	247	318	80	50	30	36	97	124
MFS25	30	85	247	353	80	50	30	36	113	155
MFS28	30	80	275	382	90	60	40	46	130	181
MFS31	32	84	275	385	90	60	40	46	157	231

Model number	Pin diameter		Min flange bolt hole diameter	Maximum flange thickness		Weight kg
	mm	inch		mm	inch	
MFS16	16	5/8"	17	2 x 22	2 x 7/8"	2.2
MFS19	19	3/4"	20	2 x 35	2 x 1 3/8"	2.7
MFS22	22	7/8"	23	2 x 47	2 x 1 13/16"	4.1
MFS25	25	1	26	2 x 62	2 x 2 7/16"	6.4
MFS28	28	1 1/8"	29	2 x 70	2 x 2 3/4"	8.2
MFS31	31	1 1/4"	32	2 x 95	2 x 3 3/4"	9.6

SFS - STEPPED FLANGE SPREADERS

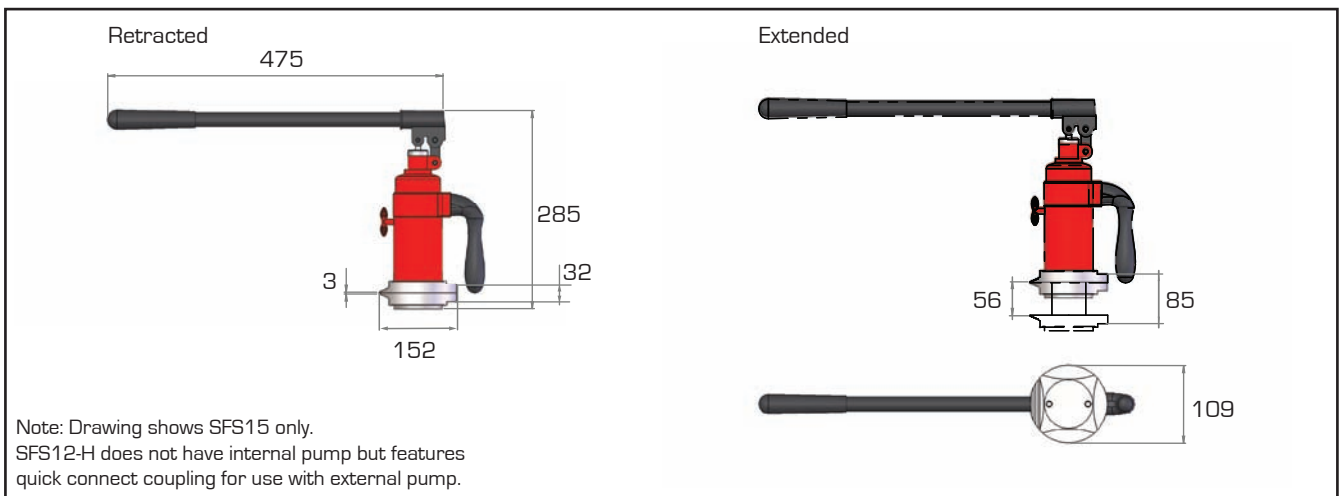


Capacities up to 15 tonnes

Stroke 53mm

Minimum gap required only 3mm

The Hi-Force range of SFS stepped flange spreaders offers a choice of either self-contained design, with in built pump mechanism, or a flange spreader head designed for use with a separate hand or powered pump. Unlike the majority of flange spreaders that utilise a two jaw mechanism, the Hi-Force SFS range has a unique four position, twin, stepped plate arrangement which greatly reduces the risk of jaw slippage during operation. The SFS12-H offers a maximum spreading capacity of 12 tonnes at 700 Bar maximum working pressure and is ideally suited for multiple position flange spreading operations, using a single pump unit with a manifold and multiple hose set up. Model SFS15 is completely self-contained with in built manually operated hydraulic hand pump and provides a superb 15 tonnes of spreading force. Both models are capable of operation within a flange gap of 3mm to 32mm and provide a spreading stroke length of 53mm.



Model number	Capacity tonnes	Stroke mm	Access gap in mm		Recommended pump/hose not included!		Weight kg
			Min	Max			
SFS12-H	12	53	3	32	HP110	HC2	5.9
SFS15	15	53	3	32	Integral pump design		6.5

SJS - HYDRAULIC STEPPED JAW SPREADER



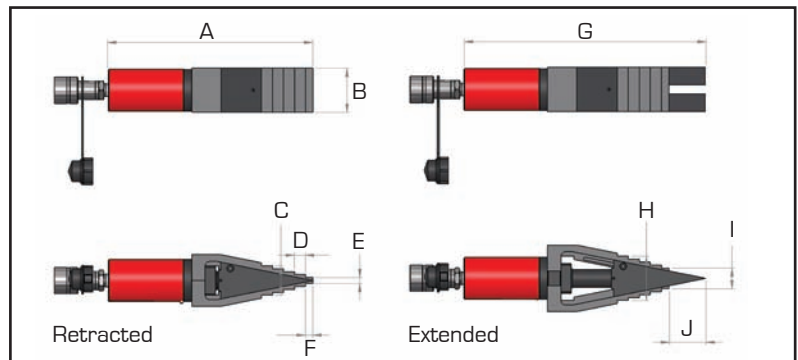
Capacity up to 13 tonnes

Supplied with safety block & stepped blocks

Maximum spread 60mm

- >> Single acting, spring assisted return
- >> Compact & lightweight design

The SJS10 hydraulic spreader offers the ideal solution for spreading, wedging and prising operations in a wide variety of industrial applications. The compact, low weight, spring assisted, piston retract design of the SJS10 offers the user a powerful 13 tonnes of spreading capacity. Manufactured from high strength steel, the low height jaw tips can easily fit within an 8mm gap and can provide a total spreading distance of 60mm in 5 operations, using the step blocks provided with the tool. Suitable for operation up to 700 Bar maximum working pressure, and supplied complete with a female half quick connect coupler for easy attachment to a Hi-Force manually operated or powered hydraulic pump.



Model number	Capacity tonnes	Oil capacity cm ³	Weight kg
SJS10	13	74	5.5

Dimensions in mm									
A	B	C	D	E	F	G	H	I	J
279	60	40	15	8	10	328	60	28	49

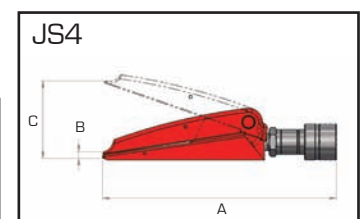
JS - HYDRAULIC JAW SPREADER



The JS4 hydraulic spreader is the ideal solution for spreading, wedging and prising operations in a wide variety of industrial applications. The compact, low weight, spring assisted return design enables the tool to fit into a gap of 9.7mm and offers a maximum spread of 94mm. Manufactured from high strength steel, with a maximum pressure of 700 Bar, the JS4 is supplied fitted with a quick connect female half coupler.

Model number	Capacity tonnes	Oil capacity cm ³	Weight kg
JS4	0.9	10.0	2.2

Dimensions in mm		
A	B	C
223	9.7	94





Capacities from 10 to 200 tonnes

Stroke lengths from 150 to 330mm

Working pressure 700 Bar

- >> Choice of manual, air or electric powered pumps
- >> Supplied complete with pressure gauge
- >> Other configurations available on request

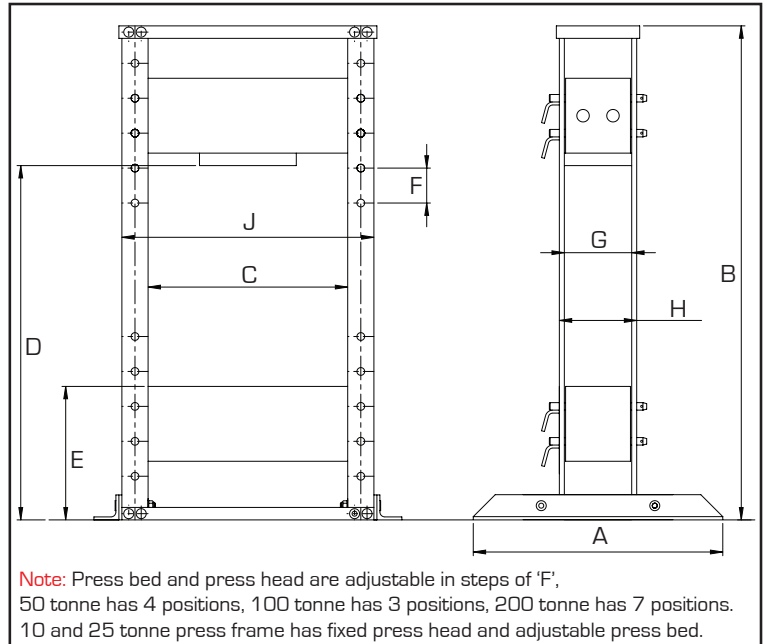
Model number	Capacity tonnes	Stroke mm	Cylinder model no. ¹	Cylinder principle	Pump model no. ²	Pump operation	Weight kg
HPB1020	10	250	HSS1010	single acting	HP110	hand operated	78
HPB1020F	10	250	HSS1010	single acting	HP227FP	foot operated	83
HPB1026	10	150	HSS106	single acting	HP110	hand operated	77
HPB1026F	10	150	HSS106	single acting	HP227FP	foot operated	82
HPB1030	10	250	HSS1010	single acting	AHP1120	air powered	78
HPB1036	10	150	HSS106	single acting	AHP1120	air powered	77
HPF1020	10	250	HSS1010	single acting	HP110	hand operated	95
HPF1030	10	250	HSS1010	single acting	AHP1120	air powered	85
HPF2520	25	250	HSS2510	single acting	HP227	hand operated	145
HPF2530	25	250	HSS2510	single acting	AHP1120	air powered	138
HPF2541	25	250	HSS2510	single acting	HEP103341	electric driven 110 V	160
HPF2542	25	250	HSS2510	single acting	HEP103342	electric driven 240 V	160
HPF2544	25	250	HSS2510	single acting	HEP207314	electric driven 415 V	160
HPF5020S	50	330	HSS5013	single acting	HP257	hand operated	470
HPF5020D	50	330	HDA5013	double acting	HP257D	hand operated	500
HPF5030S	50	330	HSS5013	single acting	AHP1121	air powered	505
HPF5030D	50	330	HDA5013	double acting	AHP1141	air powered	505
HPF5041S	50	330	HSS5013	single acting	HEP207311	electric driven 110 V	505
HPF5041D	50	330	HDA5013	double acting	HEP207411	electric driven 110 V	481
HPF5042S	50	330	HSS5013	single acting	HEP207312	electric driven 240 V	512
HPF5042D	50	330	HDA5013	double acting	HEP207412	electric driven 240 V	518
HPF5044S	50	330	HSS5013	single acting	HEP207314	electric driven 415 V	518
HPF5044D	50	330	HDA5013	double acting	HEP207414	electric driven 415 V	518
HPF10020	100	330	HDA10013	double acting	HP245D	hand operated	1011
HPF10030	100	330	HDA10013	double acting	HAP21042	air powered	1029
HPF10041	100	330	HDA10013	double acting	HEP207421	electric driven 110 V	1043
HPF10042	100	330	HDA10013	double acting	HEP207422	electric driven 240 V	1043
HPF10044	100	330	HDA10013	double acting	HEP207424	electric driven 415 V	1043
HPF20041	200	305	HDA20012	double acting	HEP310421	electric driven 110 V	3250
HPF20042	200	305	HDA20012	double acting	HEP310422	electric driven 240 V	3250
HPF20044	200	305	HDA20012	double acting	HEP310424	electric driven 415 V	3250

Notes: ¹) For detailed specification on applicable cylinders, see pages 14 & 15 for HSS range and page 19 for HDA range. ²) For detailed specification on applicable pumps, see pages 27 & 29 for HP range, page 33-36 for HEP range, page 41-42 for AHP range and page 43 for HAP range.

The HPB and HPF range of workshop presses offers a choice of 31 models with either single acting or double acting cylinders and manually operated, air powered or electric powered pumps. Floor presses incorporate an adjustable work table and dual scale pressure gauge. Factory mounted optional accessories include a mechanical bed winch for easy adjustment of the work table and multi-position V-blocks. All presses are supplied completely assembled, ready for use. Hi-Force workshop presses are manufactured to the highest quality standards, and are suitable for the most demanding jobs.

In order to fully comply with CE regulations, some presses must be equipped with

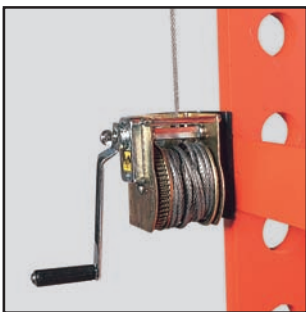
specific safety components, such as spring centered valves, two-hand control devices or others.



Press Range	Capacity tonnes
HPB1000	10
HPF1000	10
HPF2500	25
HPF5000	50
HPF10000	100
HPF20000	200

Frame dimensions in mm											
A	B	C	D (min)	D (max)	E (min)	E (max)	F	G	H	J	
280	675	394	573		95		-	-	-	545	
742	1448	508	1258		260	1010	150	-	152	660	
742	1448	508	1258		260	1010	150	-	152	660	
1000	2055	800	1140	1560	395	815	140	258	298	1000	
1000	1980	1000	1090	1370	550	830	140	338	388	1240	
1200	2500	1250	2115	1815	610	1510	150	330	410	1750	

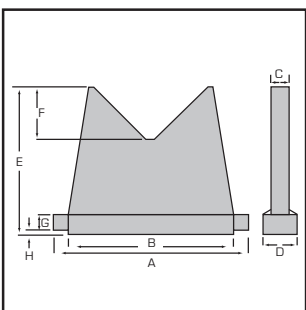
OPTIONAL EXTRAS



Multi-position V-blocks

- >> Factory fitted option
- >> Lifts and lowers work table
- >> Available for 50 and 100 tonne presses

Model number	Applicable for
HBW50	All Hi-Force 50 tonnes workshop presses, HPF range
HBW100	All Hi-Force 100 tonnes workshop presses, HPF range



- >> With flat bed and V-shape press surfaces
- >> Available for 10, 25, 50 and 100 tonne presses

Model number	Cap. per set tonnes	Dimensions in mm							
		A	B	C	D	E	F	G	H
HVB2500	10 - 25	204	154	20	45	155	45	20	8
HVB5000	50	365	265	25	50	190	60	25	10
HVB10000	100	425	325	35	60	265	85	35	10

RSM - NYLON MULTI-ROLLER STEERABLE SKATES

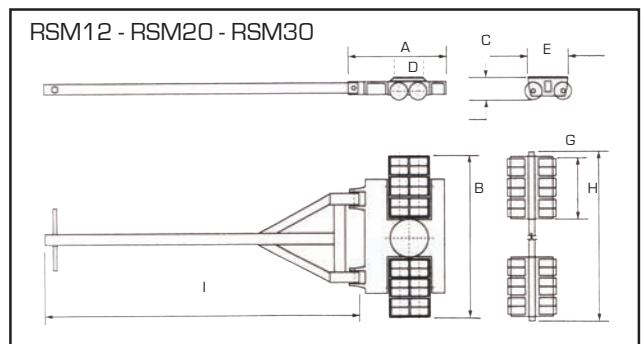
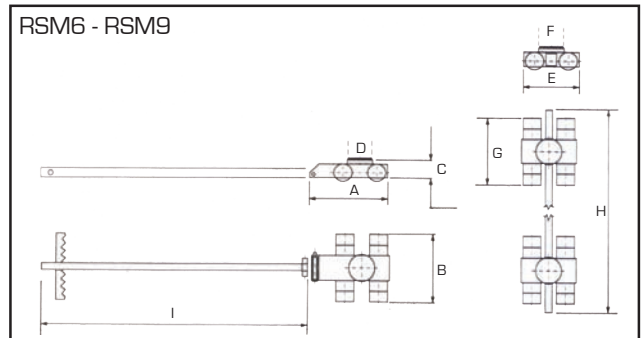


Capacities from 6 to 30 tonnes

Steerable front skate for total control

Low weight, compact size

The RSM nylon multi-roller steerable skate range is ideal for use on tiled floors and is available with capacities from 6 to 30 tonnes. These skates consist of 3 major parts: 1 steerable turntable front skate and 2 adjustable rear skates. This modular design allows the system to be easily assembled and dismantled without the use of tools. All models are fitted with low rolling resistance wheels with ball bearings and non-slip Neoprene pads on each load surface.



Model number	Capacity per skate set tonnes	No. of wheels front steerable	No. of wheels twin rear skate	Weight incl. box kg
RSM6	6	4 no. 82 mm x 48 mm	8 no. 82 mm x 48 mm	51
RSM9	9	8 no. 82 mm x 48 mm	16 no. 82 mm x 48 mm	64
RSM12	12	8 no. 82 mm x 48 mm	8 no. 82 mm x 48 mm	95
RSM20	20	16 no. 82 mm x 48 mm	16 no. 82 mm x 48 mm	118
RSM30	30	24 no. 82 mm x 48 mm	24 no. 82 mm x 48 mm	135

Dimensions in mm									
A	B	C	D	E	F	G	H	I	
									max
330	210	109	110	240	110	210	1500	1150	
330	310	109	160	240	160	310	1500	1150	
413	614	110	190	180	-	130	1500	1500	
413	673	110	190	180	-	242	1500	1500	
413	990	110	190	188	-	354	1500	1500	

RSC & RSS - MULTI-PURPOSE SKATES



Capacities from 5 to 37.5 tonnes

Available as complete kit or as individual skates

Endless hardened roller chain

The RSC and RSS range of industrial, low profile skates offer the safest, fastest and most economical method of moving heavy equipment. The range comprises of 4 models available with capacities of up to 37.5 tonnes per skate. Designed with an endless hardened roller chain which revolves around the skate, at least 5 rollers remain in contact with the floor at any one time, ensuring smooth travel even over cracked concrete floors. With a range of turntables, stabilisers, spacer bars and steering handles available, Hi-Force skates can move and position heavy and irregular shaped loads easily and more economically than other lifting devices. Hi-Force skates are also ideal for use in confined spaces and typical applications include bridge building, transformers, generators, turbines, heavy machinery and many others.

Complete kits :

Model number	Cap. per set tonnes	Skates Qty: 4	Turntables Qty: 2	Stabilisers Qty: 2	Spacer bars Qty: 4	Handles Qty: 2	Wooden box Qty: 1	Weight kg
RSC20	20	RSS20	RT20	RS20	RB20	RH20	WB1	41
RSC50	50	RSS50	RT50	RS50	RB50	RH50	WB2	94

Individual skate selection chart :

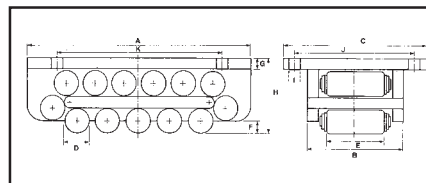
Model number	Cap. per skate tonnes	Weight kg
RSS20	5.0	4
RSS50	12.5	11
RSS100	25.0	27
RSS150	37.5	42

Length	Width	Dimensions in mm		Roller width	Roller dia
		Height less t/table	Height incl. t/table		
210	102	59	94	51	18
271	125	95	143	87	30
370	175	130	179	90	42
502	186	152	206	90	42

Note : Turntables for RSS100 (RT100) and RSS150 (RT150) are available on request.

RSH - HEAVY DUTY SKATES

The RSH heavy duty range of moving skates are ideal for movement of heavy loads such as transformers, generators, turbines and machinery. Available with capacities ranging from 15 to 100 tonnes each skate.



Model number	Capacity tonnes	Rollers in contact	Rollers total	Weight kg
RSH15	15	5	15	9
RSH20	20	4	13	12
RSH40	40	4	13	19
RSH50	50	6	17	29
RSH65	65	4	13	51
RSH100	100	6	17	92

Dimensions in mm										
A	B	C	D	E	F	G	H	I	J	K
210	100	175	18	51	6	13	76	14	140	150
220	113	190	24	60	10	14	87	14	155	150
270	130	210	30	68	10	14	104	18	175	190
320	140	220	30	68	10	18	115	18	180	240
380	168	270	42	76	19	19	145	22	220	280
530	182	300	50	86	19	19	165	22	240	410

REX & RSX - HEAVY DUTY SKATES WITH GROOVED GUIDE



Capacities from 40 to 400 tonnes

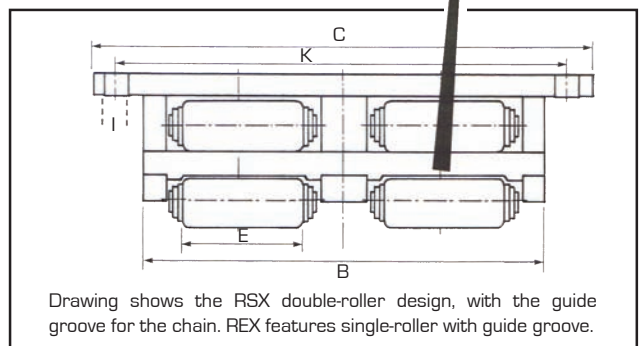
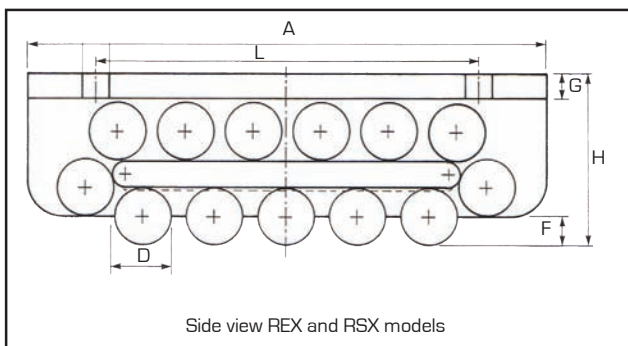
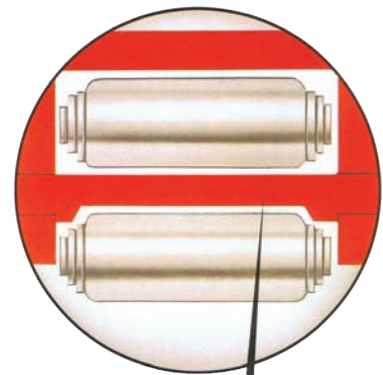
Heat treated load bearing centre plate

Heat treated, special chrome alloy chains

Available with capacities up to 200 tonnes each skate, the REX heavy duty range of single roller moving skates incorporates a chain groove cut into the centre member of the skate, which helps to keep the chain running parallel with the body and is specially suited for moving loads over long distances.

The RSX range offers the same features as the REX range, however has a double roller design, capable of transporting loads up to 400 tonnes per skate.

Both the REX and RSX models feature high quality, heat treated components and are supplied with 4 mounting bolt holes for easy attachment to the load.



Model number	Capacity tonnes	Rollers in contact	Rollers total	Weight kg
REX Range - Single-roller design				
REX40	40	4	13	20
REX50	50	6	17	29
REX65	65	4	13	52
REX100	100	6	17	93
REX150	150	9	23	162
REX200	200	13	31	266
RSX Range - Double-roller design				
RSX80	80	2 x 4	2 x 13	36
RSX100	100	2 x 6	2 x 17	57
RSX130	130	2 x 4	2 x 13	96
RSX200	200	2 x 6	2 x 17	175
RSX300	300	2 x 9	2 x 23	305
RSX400	400	2 x 13	2 x 31	485

Dimensions in mm										
A	B	C	D	E	F	G	H	I	K	L
270	130	210	30	68	10	14	104	18	175	190
320	140	220	30	68	10	18	115	18	180	240
380	168	270	42	76	19	19	145	22	220	280
530	182	300	50	86	19	19	165	22	240	410
600	205	350	50	100	20	28	190	26	280	480
900	205	380	50	100	20	38	200	33	300	720
270	260	340	30	68	10	14	104	18	305	190
320	280	360	30	68	10	18	115	18	325	240
380	336	440	42	76	19	19	145	22	390	300
530	364	480	50	86	19	19	165	22	430	420
600	410	560	50	100	20	28	190	26	490	480
900	410	590	50	100	20	38	200	33	500	720

The Hi-Force ToughLift jacking system offers users the easiest and safest method of lifting material haulers in the mining and construction industry and locomotives in the railway industry, when critical maintenance and breakdown repair work requires completion.

Suitable for lifting even the largest earth haulers in the world, the Hi-Force ToughLift is available in 50, 100, 150 and 200 tonnes lifting capacities. All models are available with either a 110 volt or 240 volt single phase electric driven pump unit or a 7 Bar compressed air driven pump version. All models are operated via a remote, push button hand pendant controller with a 6 metre length control cable to ensure the operator has precise control over the lifting operation from a safe distance away from the load.

Hi-Force ToughLift jacking systems are supplied fitted as standard with a hardened steel lifting saddle, patented “snap latch” handle assembly for easy positioning and transportation and a patented jacking system design for increased safety, enabling them to be easily positioned, in the tightest of spaces, to ensure location into the correct and exact lifting and jacking position.

Fitted with large diameter wheels and heavy duty tyres as standard, all ToughLift models are narrow in width and have the smallest footprint area in the industry.

A wide variety of optional extras are also available which include load holding blocks, swivel load caps, locking and non locking load block extensions, slip lock extensions and accessory storage baskets. Further details can be found on pages 152 to 154.

With the Hi-Force ToughLift, plant operators in mining, construction and railway industries are assured of minimal maintenance and repair downtime, of their capital intensive equipment, from the strongest and most versatile lifting jack in the world!



TL - TOUGHLIFT JACKING SYSTEMS



Working pressure 700 Bar

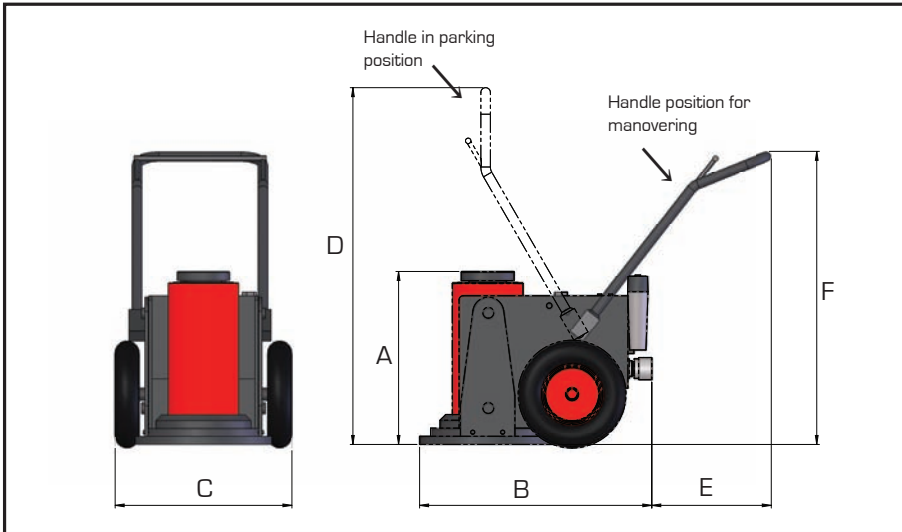
Choice of 12 models with a range of accessories

Used in mining, construction & railway industries

- >> Choice of 50, 100, 150 or 200 tonne lifting capacities
- >> Patented multi-positional lifting handle for easy transportation and positioning
- >> Available with choice of electric or air driven hydraulic pump unit
- >> Push button remote hand pendant controller with 6 metre control cable
- >> Patented jacking system for safe and correct positioning prior to load lift
- >> Wide range of accessories available for even greater versatility [see pages 152 to 154]
- >> Narrow width, with small footprint for easy access into confined spaces
- >> Integral airline filter, lubricator and pressure regulator unit (air driven models only)
- >> User friendly design with easily accessible maintenance features
- >> Large diameter, heavy duty wheels for easy positioning underneath the load

Model number	Capacity tonnes	Power Supply	Stroke mm	Weight kg	Max additional stack in mm
TL050A255	50	6-Bar air driven	254	160	680
TL050E255	50	240V electric	254	170	680
TL100A405	100	6-Bar air driven	405	307	480
TL100A530	100	6-Bar air driven	530	340	180
TL100E405	100	240V electric	405	317	480
TL100E530	100	240V electric	530	350	180
TL150A390	150	6-Bar air driven	390	348	485
TL150A520	150	6-Bar air driven	520	394	180
TL150E390	150	240V electric	390	358	485
TL150E520	150	240V electric	520	404	180
TL200A380	200	6-Bar air driven	381	395	500
TL200E380	200	240V electric	381	405	500

Note: All electric driven ToughLift jacking systems are available in 110V and 240V single phase, power supply options. For 110V version, please suffix model number with 110, i.e TL050E255-110 for 110V version.



Model Number	Dimensions in mm					
	A	B	C	D	E	F
TL050A255	435	775	507	1310	390	1110
TL050E255	435	701	507	1310	464	1110
TL100A405	635	850	600	1500	630	1150
TL100A530	813	850	600	1500	630	1150
TL100E405	635	780	600	1500	630	1150
TL100E530	813	780	600	1500	630	1150
TL150A390	635	850	600	1500	665	1185
TL150A520	813	850	600	1500	665	1185
TL150E390	635	780	600	1500	665	1185
TL150E520	813	780	600	1500	665	1185
TL200A380	635	850	600	1600	700	1220
TL200E380	635	780	600	1600	700	1220

SADDLES

Flat saddles are supplied fitted as standard to all ToughLift jacks, however tilting swivel saddles can also be supplied as an optional extra. Both types of saddle (flat or tilting swivel) can be easily fitted to all slip lock, non locking and load locking extensions.

EXTENSIONS

Hi-Force also offers a range of extensions for use with ToughLift jacking systems. Non-locking extensions can be used in multiples up to the maximum indicated on page 150 for each specific capacity jack. Similarly, slip lock extensions can also be used in multiples up to the maximum height specified on page 150. Load lock extensions can only be used one at a time, however, they can be used in conjunction with slip lock and non-locking extensions.

All extension options must terminate with a flat or swivel tilting saddle on the top of the extension stack.

LOAD BLOCK SETS

Sets comprise of the following:
(see table to the right)

Load block sets Model Number	Load Blocks	Adaptor
TLB50-250	3	1
TLB100-405	5	1
TLB100-530	7	1
TLB150-390	5	1
TLB150-520	7	1
TLB200-380	5	1

Load block sets



Load block sets Model number	Capacity tonnes	Lock out Height (mm)	To Suit Jack Model
TLB50-250	50	250	TL050A255
TLB50-250	50	250	TL050E255
TLB100-405	100	400	TL100A405
TLB100-530	100	525	TL100A530
TLB100-405	100	400	TL100E405
TLB100-530	100	525	TL100E530
TLB150-390	150	385	TL150A390
TLB150-520	150	515	TL150A520
TLB150-390	150	385	TL150E390
TLB150-520	150	515	TL150E520
TLB200-380	200	375	TL200A380
TLB200-380	200	375	TL200E380

Swivel load caps



Swivel load caps Model number	Capacity tonnes	To Suit Jack Model
TLS50	50	TL050A255
TLS50	50	TL050E255
TLS100	100	TL100A405
TLS100	100	TL100A530
TLS100	100	TL100E405
TLS100	100	TL100E530
TLS150	150	TL150A390
TLS150	150	TL150A520
TLS150	150	TL150E390
TLS150	150	TL150E520
TLS200	200	TL200A380
TLS200	200	TL200E380

Tool boxes



Small Tool box	Dimensions mm (H x L x W)	Large Tool box	Dimensions mm (H x L x W)	To Suit Jack Model
TB50S	180 x 265 x 150	TB50L	210 x 380 x 265	TL050A255
TB50S	180 x 265 x 150	TB50L	210 x 380 x 265	TL050E255
TB100S	185 x 345 x 185	TB100L	215 x 340 x 345	TL100A405
TB100S	185 x 345 x 185	TB100L	215 x 340 x 345	TL100A530
TB100S	185 x 345 x 185	TB100L	215 x 340 x 345	TL100E405
TB100S	185 x 345 x 185	TB100L	215 x 340 x 345	TL100E530
TB100S	185 x 345 x 185	TB100L	215 x 340 x 345	TL150A390
TB100S	185 x 345 x 185	TB100L	215 x 340 x 345	TL150A520
TB100S	185 x 345 x 185	TB100L	215 x 340 x 345	TL150E390
TB100S	185 x 345 x 185	TB100L	215 x 340 x 345	TL150E520
TB200S	185 x 345 x 260	TB200L	250 x 340 x 345	TL200A380
TB200S	185 x 345 x 260	TB200L	250 x 340 x 345	TL200E380

Note: All accessories on this page can be seen fitted to a Tuff Lift on page 154

Non locking extensions



Length 175mm	Length 200mm	Length 300mm	Length 400mm	Length 500mm	To suit jack model	Recommended max. extension height in mm
NLE-175-50	NLE200-50	NLE300-50	NLE400-50	NLE500-50	TL050A255	680
NLE175-50	NLE200-50	NLE300-50	NLE400-50	NLE500-50	TL050E255	680
NLE175-100	NLE200-100	NLE300-100	NLE400-100	*	TL100A405	480
NLE175-100	*	*	*	*	TL100A530	180
NLE175-100	NLE200-100	NLE300-100	NLE400-100	*	TL100E405	480
NLE175-100	*	*	*	*	TL100E530	180
NLE175-150	NLE200-150	NLE300-150	NLE400-150	*	TL150A390	485
NLE175-150	*	*	*	*	TL150A520	180
NLE175-150	NLE200-150	NLE300-150	NLE400-150	*	TL150E390	485
NLE175-150	*	*	*	*	TL150E520	180
NLE175-200	NLE200-200	NLE300-200	NLE400-200	NLE500-200	TL200A380	500
NLE175-200	NLE200-200	NLE300-200	NLE400-200	NLE500-200	TL200E380	500

* = Exceeds recommended maximum extension height

Slip lock extensions



Length 175mm	Length 200mm	Length 300mm	Length 400mm	Length 500mm	To suit jack model	Recommended max. extension height in mm
SLE-175-50	SLE200-50	SLE300-50	SLE400-50	SLE500-50	TL050A255	680
SLE175-50	SLE200-50	SLE300-50	SLE400-50	SLE500-50	TL050E255	680
SLE175-100	SLE200-100	SLE300-100	SLE400-100	*	TL100A405	480
SLE175-100	*	*	*	*	TL100A530	180
SLE175-100	SLE200-100	SLE300-100	SLE400-100	*	TL100E405	480
SLE175-100	*	*	*	*	TL100E530	180
SLE175-150	SLE200-150	SLE300-150	SLE400-150	*	TL150A390	485
SLE175-150	*	*	*	*	TL150A520	180
SLE175-150	SLE200-150	SLE300-150	SLE400-150	*	TL150E390	485
SLE175-150	*	*	*	*	TL150E520	180
SLE175-200	SLE200-200	SLE300-200	SLE400-200	SLE500-200	TL200A380	500
SLE175-200	SLE200-200	SLE300-200	SLE400-200	SLE500-200	TL200E380	500

* = Exceeds recommended maximum extension height

Load lock extensions



Length 175mm	Length 200mm	Length 300mm	Length 400mm	Length 500mm	To suit jack model	Recommended max. extension height in mm
LLE-175-50	LLE200-50	LLE300-50	LLE400-50	LLE500-50	TL050A255	680
LLE175-50	LLE200-50	LLE300-50	LLE400-50	LLE500-50	TL050E255	680
LLE175-100	LLE200-100	LLE300-100	LLE400-100	*	TL100A405	480
LLE175-100	*	*	*	*	TL100A530	180
LLE175-100	LLE200-100	LLE300-100	LLE400-100	*	TL100E405	480
LLE175-100	*	*	*	*	TL100E530	180
LLE175-150	LLE200-150	LLE300-150	LLE400-150	*	TL150A390	485
LLE175-150	*	*	*	*	TL150A520	180
LLE175-150	LLE200-150	LLE300-150	LLE400-150	*	TL150E390	485
LLE175-150	*	*	*	*	TL150E520	180
LLE175-200	LLE200-200	LLE300-200	LLE400-200	LLE500-200	TL200A380	500
LLE175-200	LLE200-200	LLE300-200	LLE400-200	LLE500-200	TL200E380	500

* = Exceeds recommended maximum extension height

Note: All accessories on this page can be seen fitted to a ToughLift on page 154



ToughLift TL50A255 fitted with load block set and swivel load cap.



ToughLift TL100A530 fitted with swivel load cap.



ToughLift TL50A255 fitted with large and small toolbox.



ToughLift TL100A530 fitted with non locking extension.



ToughLift TL100A530 fitted with slip lock extension.



ToughLift TL50A255 fitted with load block set, load lock extension and swivel load cap.

Hi-Force[®]

HYDRAULIC TOOLS

UK Head Office

Hi-Force Limited
Prospect Way, Daventry
Northants, NN11 8QH
United Kingdom

Tel: +44 1327 301 000

Fax: +44 1327 706 555

daventry@hi-force.com

Your authorised distributor:

www.hi-force.com